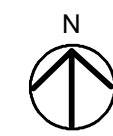
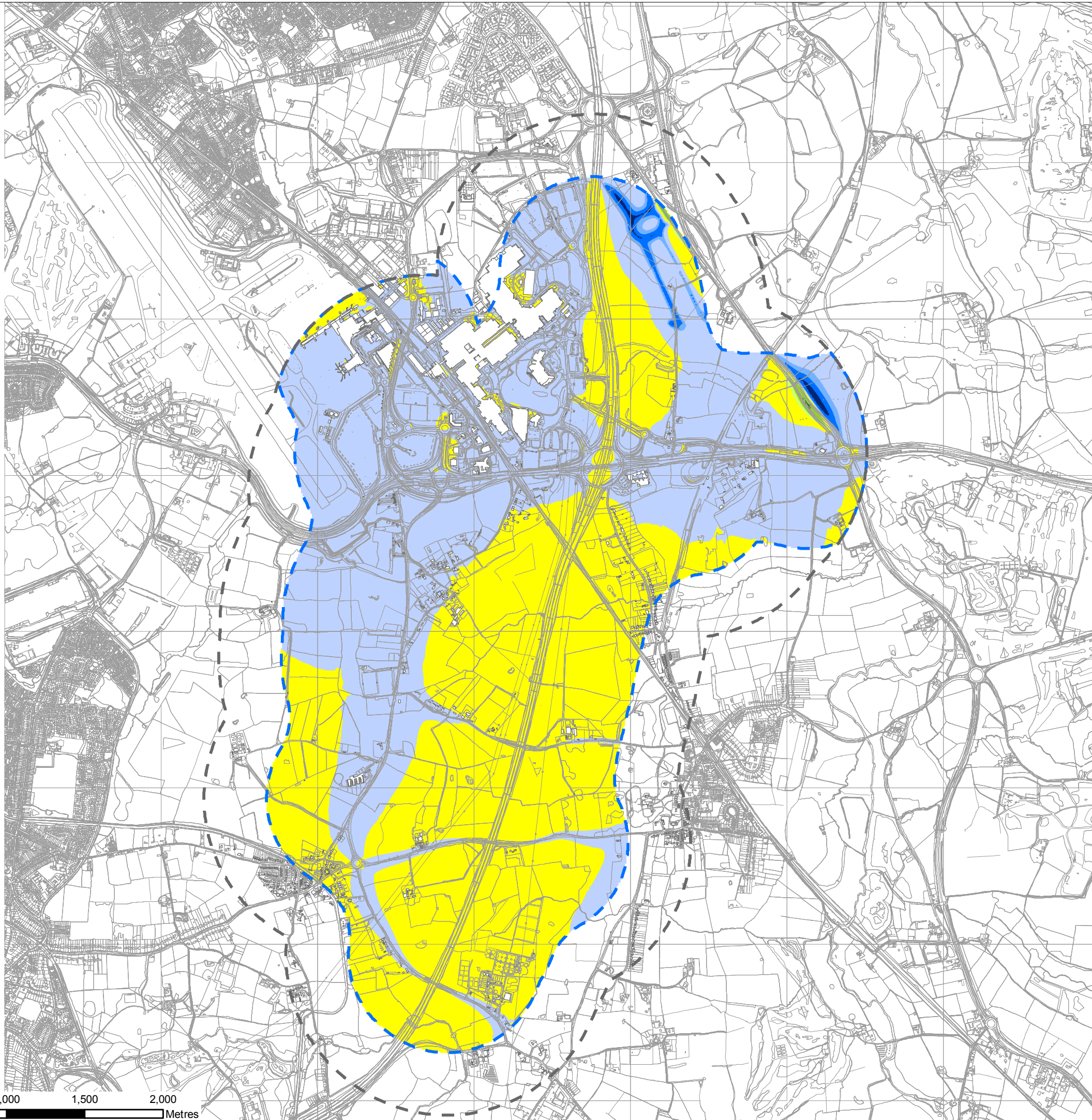


Filename: K:\GIS Management\60543032 - M42 Jct 6 GIS Folder - GIS01 - Figures\New Template\Figure 12.3.mxd



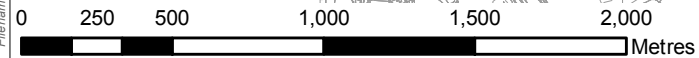
**NOTES**  
THIS DRAWING IS TO BE READ IN CONJUNCTION WITH ALL OTHER RELEVANT DOCUMENTATION.

**LEGEND**

- STUDY AREA (1KM)
- CALCULATION AREA (600M)

DO MINIMUM LONG TERM CHANGE: 2038 DO MINIMUM MINUS 2023 DO MINIMUM LA10, 18H DB AT 4M (FREE-FIELD)

- <math>\leq -10.0</math> MAJOR DECREASE
- 5.0 TO -9.9 MODERATE DECREASE
- 3.0 TO -4.9 MINOR DECREASE
- <math>< 0</math> TO -2.9 NEGLIGIBLE DECREASE
- 0 TO +2.9 NEGLIGIBLE INCREASE
- +3.0 TO +4.9 MINOR INCREASE
- +5.0 TO +9.9 MODERATE INCREASE
- $\geq 10.0$  MAJOR INCREASE



FIRST ISSUE	GB	JG	12/12/18	C01
Revision Details	By	Check	Date	Suffix
Purpose of Issue				
<b>DCO SUBMISSION</b>				
Client				
Highways England Floor 5 Two Colmore Square 38 Colmore Circus B4 6BN				
Development Consent Order Number		TR010027		
Project Title				
<b>M42 JUNCTION 6 IMPROVEMENT</b>				
Drawing Title				
<b>FIGURE 12.3 LONG TERM CHANGE IN DO-MINIMUM TRAFFIC</b>				
Designed AP	Drawn GB	Checked SS	Approved JG	Date 12/12/18
Internal Project No 60543032			Suitability D7	
Scale @ A3 1:25,000		Zone M42		
THIS DOCUMENT HAS BEEN PREPARED PURSUANT TO AND SUBJECT TO THE TERMS OF AECOM'S APPOINTMENT BY ITS CLIENT. AECOM ACCEPTS NO LIABILITY FOR ANY USE OF THIS DOCUMENT OTHER THAN BY ITS ORIGINAL CLIENT OR FOLLOWING AECOM'S EXPRESS AGREEMENT TO SUCH USE, AND ONLY FOR THE PURPOSES FOR WHICH IT WAS PREPARED AND PROVIDED.				
Drawing Number HE551485 -ACM	Originator -EGN-	Volume -DR-DC-0131	Rev C01	
M42_SW_ZZ_ZZ		Location Type   Role   Number		